



## CODELINE<sup>®</sup> - 40S SERIES

### 4 INCH SIDE ENTRY MEMBRANE HOUSING FOR RO APPLICATIONS

#### MEMBRANE HOUSING DATASHEET

ARTICLE CODE: 40S30, 40S45, 40S60, 40S30 (NC), 40S45 (NC), 40S60 (NC)

#### GENERAL INFORMATION

Codeline 40S Series is membrane housing of 4" diameter with side entry design. This is used for commercial, municipal and industrial RO applications. Vessel models are available upto a maximum operating pressure of 300 PSI, 450 PSI & 600 PSI with multipoint connectivity. These are made up of epoxy / glass composite to meet the demands of long term and continuous use in RO processes. Codeline 40S Series vessels can accommodate any standard\* 4" membrane element. The 40S Series also comes with an optional sanitary connection.

\* Standard element length = 40" long

#### UNIQUE FEATURES

- Multi-porting option for connecting vessels to each other
- Various models are available with coded and non-coded features
- Mirror Finish ID for easy & quick loading and unloading of membranes
- Quick lock head retention system for quick access to membranes
- Exteriors coated with high gloss polyurethane paint for UV resistance
- Compact design for use in various water treatment units
- All components of the shell and head are constructed from material that are NSF listed
- Head seal area is formed by mandrel surface; hence more accurate
- Head seal is formed inside the groove, hence doesn't roll during head assembly
- Single piece head assembly reduces number of spares (available as non-coded option for all pressure ratings).

#### CERTIFICATIONS

- Codeline 40S non-coded: CE & NSF certified
- Codeline 40S coded: ASME code compliant, CE certified NSF certified

#### CODELINE 40S SERIES SPECIFICATION\*

##### Code Compliant

MODEL NUMBER	DRAWING NUMBER	MAX. OPERATING PRESSURE	MAX. OPERATING TEMPERATURE	QUALIFICATION PRESSURE	ELEMENT LENGTH
CODELINE 40S30	99311	300 PSI / 20 Bar	120 °F / 49 °C	1800 PSI / 124 Bar	1-6
CODELINE 40S45	99315	450 PSI / 31 Bar	120 °F / 49 °C	2700 PSI / 186 Bar	1-6
CODELINE 40S60	99313	600 PSI / 41 Bar	120 °F / 49 °C	3600 PSI / 248 Bar	1-6

##### Non-coded\*\*

MODEL NUMBER	DRAWING NUMBER	MAX. OPERATING PRESSURE	MAX. OPERATING TEMPERATURE	QUALIFICATION PRESSURE	ELEMENT LENGTH
CODELINE 40S30 NC	99312	300 PSI / 20 Bar	120 °F / 49 °C	1800 PSI / 124 Bar	1-6
CODELINE 40S45 NC	99316	450 PSI / 31 Bar	120 °F / 49 °C	2700 PSI / 186 Bar	1-6
CODELINE 40S60 NC	99314	600 PSI / 41 Bar	120 °F / 49 °C	3600 PSI / 248 Bar	1-6

\* Specifications are subjected to change without prior notice (for more details refer to model specific engineering drawings)

\*\* 40S non-coded models cannot be code stamped

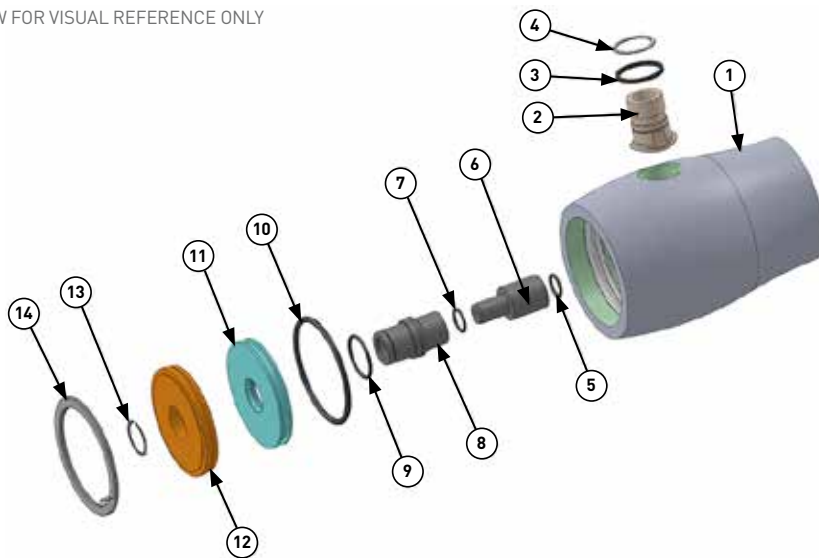
# CODELINE<sup>®</sup> - 40S SERIES

## 4 INCH SIDE ENTRY MEMBRANE HOUSING FOR RO APPLICATIONS

### MEMBRANE HOUSING DATASHEET

#### EXPLODED VIEW & DETAILS (CODED MODELS)

A GENERIC VIEW FOR VISUAL REFERENCE ONLY



#### PARTS TABLE

DRG REG	QTY	DESCRIPTION	MATERIAL	40S30	40S45	40S60
				PART NUMBER	PART NUMBER	PART NUMBER
1	1	Shell	Filament Wound Epoxy / Glass composites. Head Locking grooves integrally wound in place.	Order section	Order section	Order section
2	AR	F / C Port	CF8M / CF3M	CF8M As required	CF3M As required	CF3M As required
3	AR	F / C Port Seal	Ethylene Propylene - O Ring	As required	As required	As required
4	AR	F / C Port Retainer	300 Series Stainless Steel	As required	As required	As required
5	AR	PWT Seal	Ethylene Propylene - O Ring	As required	As required	As required
6	2	Adapter	Engineering Thermoplastic	As required	As required	As required
7	2	Adapter Seal	Ethylene Propylene - O Ring	45296	45296	45296
8	2	Permeate Port	Engineering Thermoplastic	96807	96807	96807
9	2	Permeate Port Seal	Ethylene Propylene - O Ring	45335	45335	45335
10	2	Head Seal	Ethylene Propylene - O Ring	45317	45317	45317
11	2	Sealing Plate	Engineering Thermoplastic	96855	96855	96855
12	2	Bearing Plate	316L Stainless Steel	96803	96803	96803
13	2	Perm Port Retainer	300 Series Stainless Steel	45242	45242	45242
14	2	Retainer Ring	316 Stainless Steel	45260	45260	45260
15*	AR	Saddle	Engineering Thermoplastic	45058	45058	45058
16*	AR	Strap Assembly	304 Stainless Steel Cushion	47459	47459	47459

\* Not shown in the exploded view

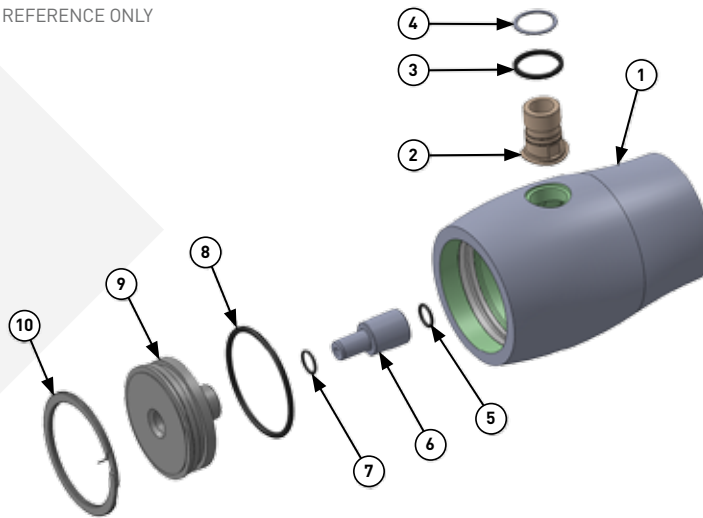
# CODELINE<sup>®</sup> - 40S SERIES

## 4 INCH SIDE ENTRY MEMBRANE HOUSING FOR RO APPLICATIONS

MEMBRANE HOUSING DATASHEET

### EXPLODED VIEW & DETAILS (NON-CODED MODELS)

A GENERIC VIEW FOR VISUAL REFERENCE ONLY



### PARTS TABLE

DRG REG	QTY	DESCRIPTION	MATERIAL	40S30 NC	40S45 NC	40S60 NC
				PART NUMBER	PART NUMBER	PART NUMBER
1	1	Shell	Filament Wound Epoxy / Glass composites. Head Locking grooves integrally wound in place.	Order section	Order section	Order section
2	AR	F / C Port	CF8M / CF3M	CF8M As required	CF3M As required	CF3M As required
3	AR	F / C Port Seal	Ethylene Propylene - O Ring	As required	As required	As required
4	AR	F / C Port Retainer	300 Series Stainless Steel	As required	As required	As required
5	AR	PWT Seal	Ethylene Propylene - O Ring	As required	As required	As required
6	2	Adapter	Engineering Thermoplastic	As required	As required	As required
7	2	Adapter Seal	Ethylene Propylene - O Ring	45296	45296	45296
8	2	Head Seal	Ethylene Propylene - O Ring	45317	45317	45317
9	2	End Plug	Engineering Thermoplastic	96827	96827	96827
10	2	Retainer Ring	316 Stainless Steel	45260	45260	45260
11*	AR	Saddle	Engineering Thermoplastic	45058	45058	45058
12*	AR	Strap Assembly	304 Stainless Steel Cushion	47459	47459	47459

\* Not shown in the exploded view