



CODELINE[®] - 40E SERIES

4 INCH END ENTRY MEMBRANE HOUSING FOR RO APPLICATIONS

MEMBRANE HOUSING DATASHEET

ARTICLE CODE: 40E30N, 40E60, 40E100

GENERAL INFORMATION

Codeline 40E Series is membrane housing of 4" diameter with end entry design. This is used for commercial and industrial RO applications. Vessel models are available upto a maximum operating pressure of 300 PSI, 600 PSI & 1000 PSI. These are made up of epoxy / glass composite to meet the demands of long term and continuous use in RO processes. Codeline 40E Series vessels can accommodate any standard* 4" membrane element.

* Standard element length = 40 " long

UNIQUE FEATURES

- Mirror Finish ID for easy & quick loading and unloading of membranes
- Quick lock head retention system for quick access to membranes
- Exteriors coated with high gloss polyurethane paint for UV Resistance
- Compact design for use in compact and low energy water treatment units
- More accurate Head Seal Area is formed by mandrel surface
- Head Seal is captured, hence doesn't roll during head assembly fitment

CERTIFICATIONS

- Codeline 40E30N-2 & Codeline 40E30N-3: CE certified
- Codeline 40E60: CE certified
- Codeline 40E100: ASME code compliant & CE certified

CODELINE 40E SERIES SPECIFICATION*

MODEL NUMBER	DRAWING NUMBER	MAX. OPERATING PRESSURE	MAX. OPERATING TEMPERATURE	QUALIFICATION PRESSURE	ELEMENT LENGTH
CODELINE 40E30N	518016	300 PSI / 20 Bar	120 °F / 49 °C	1800 PSI / 124 Bar	1-3
CODELINE 40E60	518017	600 PSI / 41 Bar	120 °F / 49 °C	3600 PSI / 248 Bar	1-6
CODELINE 40E100	518015	1000 PSI / 68 Bar	120 °F / 49 °C	6000 PSI / 413 Bar	1-7

* Specifications are subjected to change without prior notice (for more details refer model specific engineering drawings)

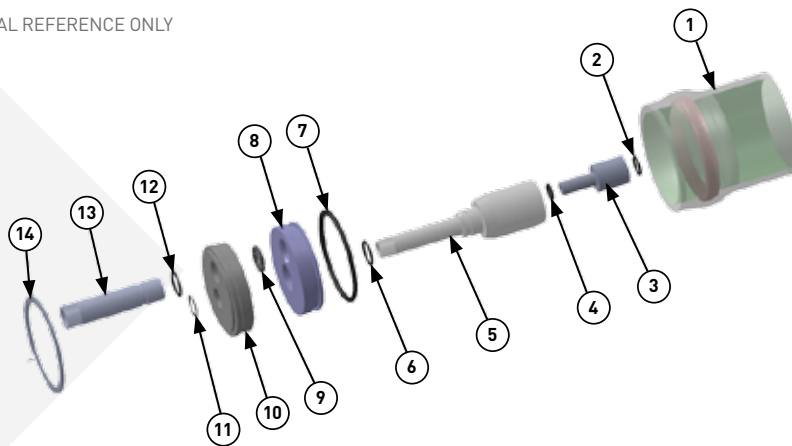
CODELINE[®] - 40E SERIES

4 INCH END ENTRY MEMBRANE HOUSING FOR RO APPLICATIONS

MEMBRANE HOUSING DATASHEET

EXPLODED VIEW & DETAILS

A GENERIC VIEW FOR VISUAL REFERENCE ONLY



PARTS TABLE

DRG REG	QTY	DESCRIPTION	MATERIAL	40E30N	40E60	40E100
				PART NUMBER	PART NUMBER	PART NUMBER
1	1	Shell	Filament Wound Epoxy / Glass composites. Head Locking grooves integrally wound in place.	Order section	Order section	Order section
2	AR	PWT Seal	Ethylene Propylene - O Ring	NA	As required	As required
3	2	Adapter	Engineering Thermoplastic	NA	As required	As required
4	2	Adapter Seal	Ethylene Propylene - O Ring	45296	45294	45294
5	2	Permeate Port	Engineering Thermoplastic	NA	NA	47469
6	2	Permeate Port Seal	Ethylene Propylene - O Ring	NA	NA	45299
7*	2	Plug Seal	Ethylene Propylene - O Ring	45317	45317	45317
8*	2	Sealing Plate	Engineering Thermoplastic	NA	NA	50481
9	2	Port Retainer Set	CF8M Cast SST, Two-Piece Set	NA	NA	50489
10	2	End Plug Sub Assembly / Bearing Plate	Engg. Thermoplastic*** / 6061-T6 hard anodized Alum. Alloy	95927***	50312***	47471
11	2	Port Retainer	PH 15-7 MO SST	NA	NA	45244
12	2	F / C Port Seal	Ethylene Propylene - O Ring	NA	NA	45299
13**	2	F / C Port	UNS32750	NA	NA	47472
14	2	Retaining Ring	316 Stainless Steel	45260	45260	45260
15*	AR	Saddle	Engineering Thermoplastic	45058	45058	45058
16*	AR	Strap Assembly	304 Stainless Steel Cushion	47459	47459	47459

* Not shown in the exploded view and optional for the 40E30N

** For 40E100 the UNS32750 material is suitable only

*** Engg. thermoplastic material

